

# SAFETY AND SCHOOL ENVIRONMENT

## Non-CSAP Course Offerings

Your School Offers	does	does not
• art.....	<input checked="" type="checkbox"/>	<input type="checkbox"/>
• drama or theater.....	<input checked="" type="checkbox"/>	<input type="checkbox"/>
• music.....	<input checked="" type="checkbox"/>	<input type="checkbox"/>
• physical education.....	<input checked="" type="checkbox"/>	<input type="checkbox"/>
• opportunity for civic or community engagement.....	<input checked="" type="checkbox"/>	<input type="checkbox"/>
• internet safety program.....	<input checked="" type="checkbox"/>	<input type="checkbox"/>
• International Baccalaureate.....	<input type="checkbox"/>	<input checked="" type="checkbox"/>
• extracurricular activities.....	<input checked="" type="checkbox"/>	<input type="checkbox"/>
• athletics.....	<input checked="" type="checkbox"/>	<input type="checkbox"/>
• career and technical education.....	<input checked="" type="checkbox"/>	<input type="checkbox"/>
• advanced placement.....	<input checked="" type="checkbox"/>	<input type="checkbox"/>
• honors.....	<input checked="" type="checkbox"/>	<input type="checkbox"/>

## Safety and Discipline

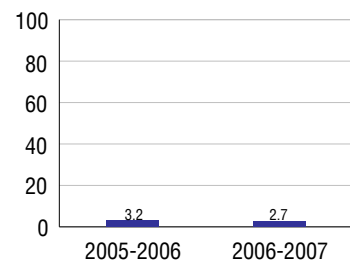
Safe schools are a top priority for parents, teachers, and communities. Your school safety and discipline record for the 2007-2008 school year is:

Type of Incident	Number of Incidents Reported	Percent of Total Incidents
Substance Abuse - Drugs	12	10.3%
Substance Abuse - Alcohol	7	6.0%
Substance Abuse - Tobacco	11	9.5%
Felony Assaults	2	1.7%
Fights	15	12.9%
Possession of Dangerous Weapons	1	0.9%
Other Violations Code of Conduct	68	58.6%

## Student Attendance and School Calendar

2007-2008	Your School
Enrollment	1,193
Average Daily Attendance	1,104
Student Dropouts	2.7%

## Dropout Rate



## Student Information Over Time

	2005-2006	2006-2007	2007-2008
Student Enrollment Stability	96.8%	96.3%	95.0%
Students Eligible for Free and Reduced Lunch	11.0 %	14.4 %	2.7 %

For more information and further details about this report, visit [www.state.co.us/schools](http://www.state.co.us/schools)  
 Colorado Department of Education, 201 East Colfax Ave. Denver, CO 80203  
**Fort Collins High School**  
 1550/3046/H  
 3400 Lambkin Way . Fort Collins, CO 80525 . 970-488-8021  
 10/20/2008

# DISTRICT TAXPAYER'S REPORT

## Sources of School District Revenue 2007

Local Tax Contribution	\$114,250,638
State Tax Contribution	80,427,619
Federal Grants	15,050,605
State Grants	7,563,555
Private/Partnership Grants	1,336,324
Other Discretionary Income	21,077,908
<b>Total District Operating Revenue</b>	<b>\$239,706,649</b>
Long Term Debt Proceeds	0
<b>Total District Revenue</b>	<b>\$239,706,649</b>
<b>Total District Operating Revenue Per Pupil =</b>	<b>\$10,027</b>
<b>Total District Revenue Per Pupil (Including Long Term Debt) =</b>	<b>\$10,027</b>
<b>District Per Pupil Operating Revenue =</b>	<b>\$5,711</b>
<b>State Average Per Pupil Operating Revenue =</b>	<b>\$6,080</b>

## District Use of Funds 2007

Instructional & Instructional Support	\$140,809,614
Administration	16,345,848
Building & Facilities Maintenance	24,946,494
Operational Expenditures	16,978,954
Debt Service	25,233,553
Other Expenditures	6,325,146
<b>Total District Operating Expenditures</b>	<b>\$230,639,609</b>
Capital Expenditures	20,503,549
<b>Total District Use of Funds</b>	<b>\$251,143,158</b>

## District Debt and Capital Construction & Equipment

Total Outstanding Bonded Debt	\$238,809,466
Average Annual Percentage Interest Rate on Debt	4.42%
Amount Raised from Most Recent Bond	\$175,000,000
Amount Spent on New Buildings During Last 2 Years	\$37,207,317

## Accreditation

Accreditation is Colorado's primary accountability system, incorporating achievement levels, academic growth, achievement gaps, post-secondary readiness, improvement planning, and compliance. The state accredits districts and districts accredit individual schools.

District Accreditation Status for the 2007-2008 school year:

## Voter Approved Funding Changes

Your community did  /did not  hold an election in November 2006

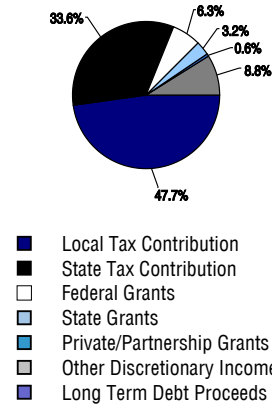
The following items have been approved by voters:

TABOR Override

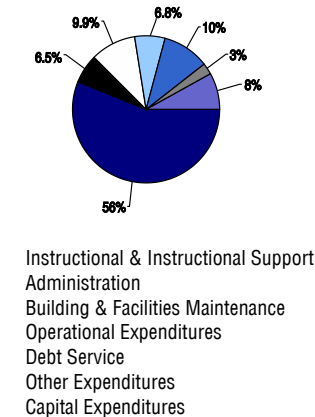
Bond

Mill Levy Increase

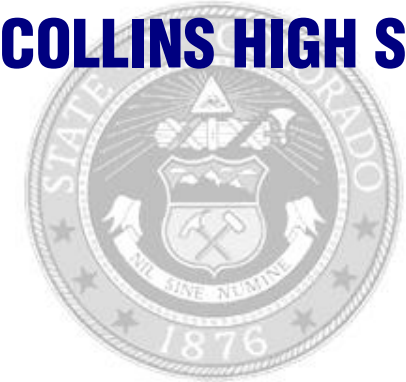
## District Source of Funds 2007



## District Use of Funds 2007



# FORT COLLINS HIGH SCHOOL



## POUDRE R-1

<http://www.psdschools.org/>  
**School Accountability Report**  
**2007-2008 School Year**

## School Performance Summary

**Overall Academic Performance on State Assessments** **High**

**Academic Growth of Students** **Low**

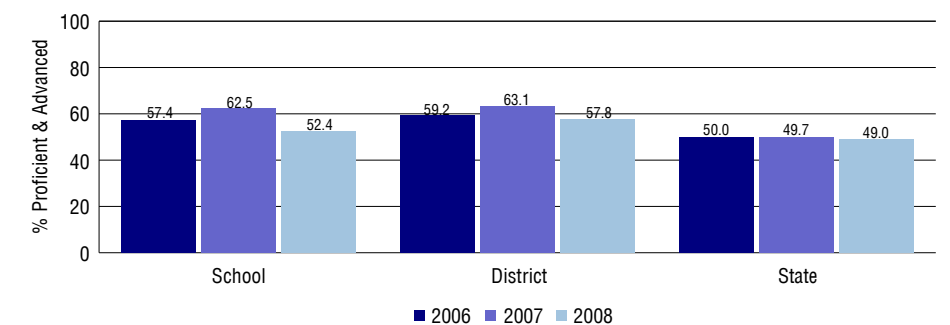
### Overall Academic Performance on State Assessments

Each school in the State received a rating of "Excellent", "High", "Average", "Low", or "Unsatisfactory" for student academic performance based on 2007-2008 CSAP and COACT results. The rating is calculated using weighted percentages of each CSAP proficiency level for all content area and grade results for the school, as well as average COACT Reading, Writing, and Math Grade 11 results.

### Academic Growth of Students

Each school in the State received a rating of "Low", "Typical", or "High" for student academic growth based on CSAP results. The calculation method is new for 2007-2008. The rating is calculated using student percentile scores matched over two years. More information about the Overall Academic Performance rating and Academic Growth of Students calculations can be found here: [http://www.cde.state.co.us/cdeassess/SAR\\_Info.html](http://www.cde.state.co.us/cdeassess/SAR_Info.html).

## Percent Proficient and Advanced for High Grades for All Content Areas



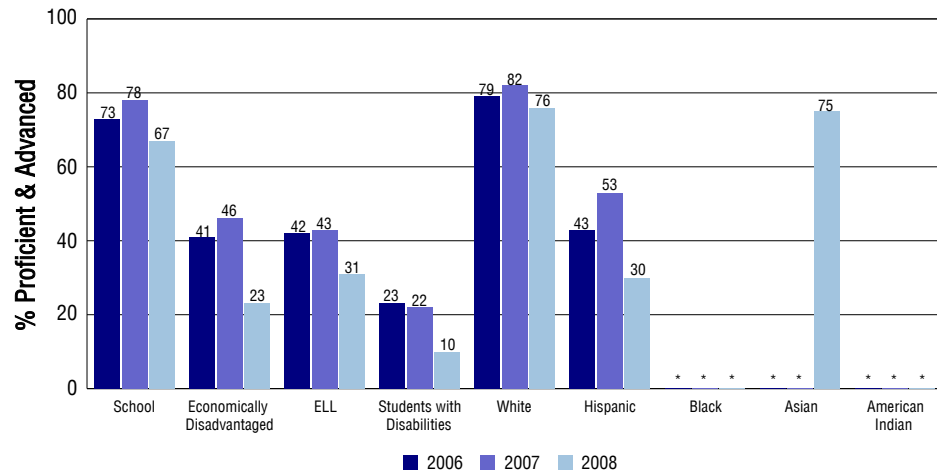
## Student Test Scores Used For Calculating Overall Academic Performance

93.1%	Test Scores Counted
1.7%	Test Scores not used due to Language
5.2%	Test Scores not used due to New Student

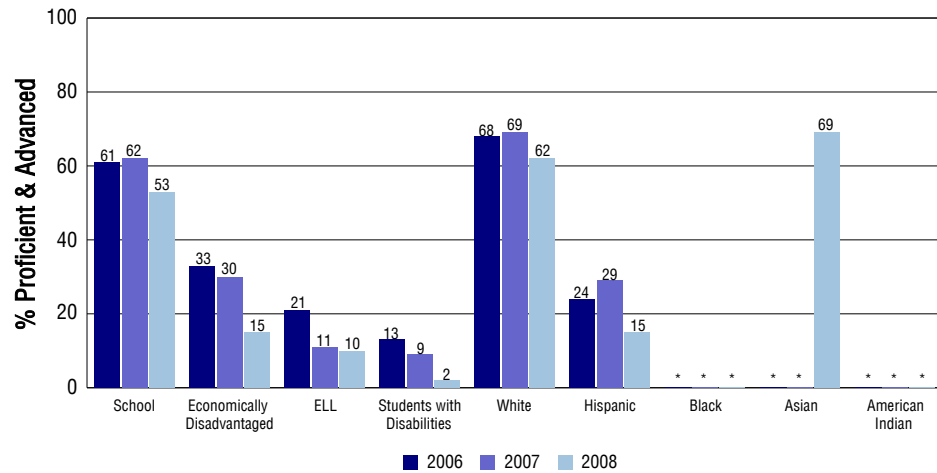
## STUDENT PERFORMANCE

These graphs show the percent Proficient and Advanced trends over the past three years for Reading, Writing, and Math. Results are presented for the entire school for all reported grades as well as for different subgroups. Note: \* indicates any group with less than 16 student results to be reported.

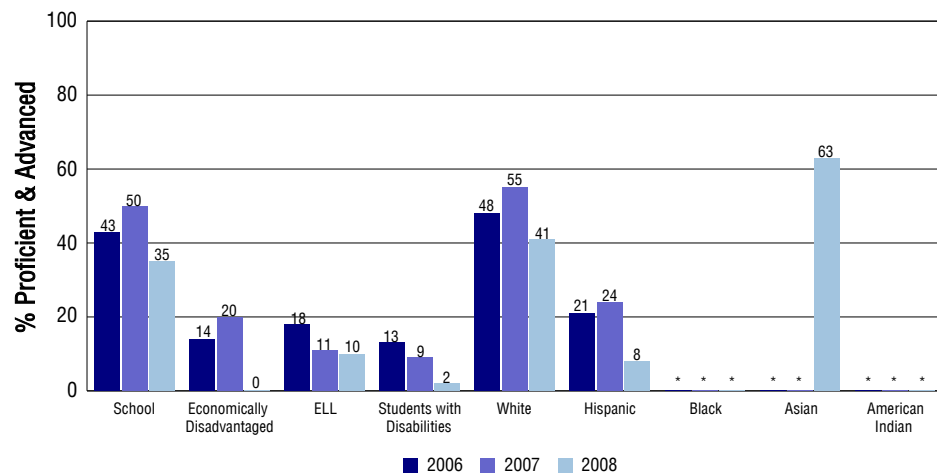
### Reading



### Writing



### Math



## SCHOOL INFORMATION

### School Pride (as submitted by your district)

- In 2007 87% of students who scored unsatisfactory on the 9th grade CSAP Math test showed at least one full years growth in there 10th grade year at FCHS.
- FCHS is in the top ten in the state of Colorado in Advanced Placement Scores with 92 AP scholars in 2007.
- At FCHS 62% of teaching staff hold a masters degree or higher.
- The Home of the Champions with 61 state championship titles & a power ranking of #3 for all class 5A schools in CO athletically, along with 52 club offerings.

### School Goals (as submitted by your district)

Promote student enrollment and class offerings in Advance Placement courses. Enhance professional development opportunities for staff members serving to increase the use of researched based instructional strategies thus augmenting the rigor in all classrooms.

### No Child Left Behind - Adequate Yearly Progress

Did your school make AYP in reading?	No	Math?	No
Did your school make the graduation rate targets?	Yes		
How many targets does your school have?	25	Met?	19

Based on this school's academic performance, your child may be eligible for one or more of the following; ask your school if your child qualifies for:

Extra academic instruction either before or after-school, or in the summer  
Mentoring

For additional information regarding Adequate Yearly Progress please visit  
<http://www.cde.state.co.us/FedPrograms/ayp/index.asp>

### How Fort Collins High School Compares To High Schools Within A 75-Mile Radius

School	Program Type	Academic Performance	Academic Growth
Polaris Expeditionary Learning School	Alternative	Low	Low
Fossil Ridge High School		Excellent	Low
Ridgeview Classical Charter Schools	Charter	Excellent	High
Rocky Mountain High School		High	Low
Peak Alternative Program	Alternative	Unsatisfactory	No Rating
Poudre High School		High	Typical
Windsor High School(1)		Average	Typical
Loveland High School(2)		High	Low
Harold Ferguson High School(2)	Alternative	Low	No Rating
Thompson Valley High School(2)		Average	Low

1 Located in Windsor RE-4 School District.  
2 Located in Thompson R-2J School District.

## ABOUT OUR STAFF

### School Employment

Each year, your district reports to the Colorado Department of Education on the number of adults who work in your school, as well as the type of work they do. Last year, your school employed:

	Your School		District	
	Full Time	Part Time	Full Time	Part Time
Teachers	56	7	1350	232
Paraprofessionals	11	3	449	201
Administrators	4	0	94	8
Other Professionals	0	0	180	86
School Support	25	3	612	191
School Counselors	4	0	48	26
School Librarians	1	0	28	7
<b>Total Staff</b>	113		3406	

### Students per Teacher Ratio

	Student Enrollment	Students per Teacher
Grade 10	432	21.5
Grade 11	353	17.6
Grade 12	408	20.3

### Professional Experience of Teachers

	Your School	District
Average years of teaching experience	14	11
Percent of teachers teaching in the subject in which they received their degree	76%	74%
Number of teachers with Masters or Doctoral degrees	39	879
Teachers with 3 years or more of teaching experience	54	1297
Teachers with less than 3 years of teaching experience	9	285
Number of professional development days	4	4

### Salaries

	Your School	District	State
Average Teacher Salary	\$50,137	\$47,380	\$47,494
Average Administrator Salary	\$88,626	\$90,845	\$80,444

Principal: Mark Eversole

Number of years as Principal at this school: 3

Number of years as Principal at any school: 3