



**Poudre School District
School Improvement Plan
Fossil Ridge HS
2007-2008**

General Information

Address: 5400 Ziegler Road
 Phone: 970-488-6260
 Principal: Dierdre Cook

Demographics

Female: 47.05%
 Male: 52.95%

Enrollment

	<u>Students Enrolled During School Year</u>	<u>Students Enrolled At End of Year</u>		
10th grade:	411	379	Undeclared:	0.54%
11th grade:	382	334	American Indian:	1.00%
12th grade:	308	292	Asian-Pacific islander:	2.18%
Total Students:	1101	1,005	Black:	0.73%
			Hispanic:	6.09%
			White:	89.46%

Mobility Rate for the 2007-2008 School Year:

Entire Year Mobility: 108.27%
 School Year Mobility: 12.22%

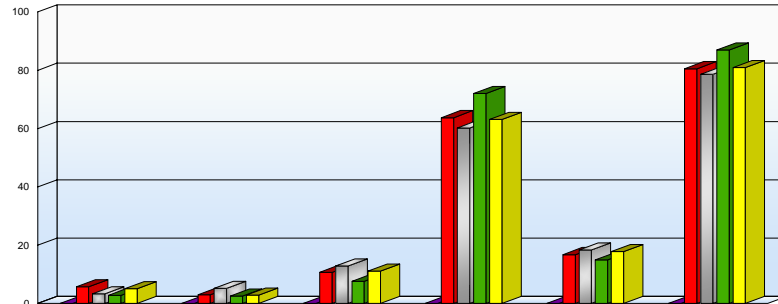
Free/Reduced Lunch: 6.09%
 Full Pay Lunch: 93.91%

Special Ed: 8.63%
 ELL: 1.82%

Curriculum: Colorado & Poudre School District Standards met through Standard School Curriculum
Grade Configuration: 10th - 12th Grade

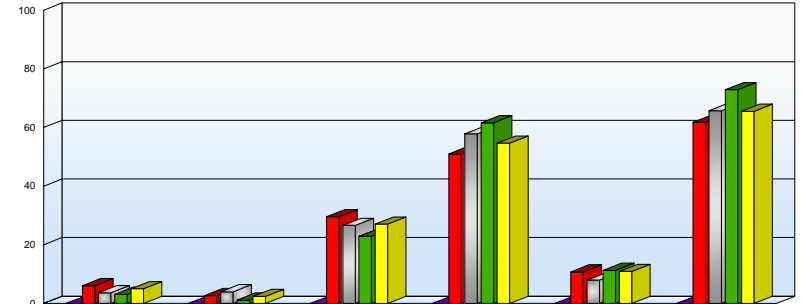
Fossil Ridge HS 10th Grade CSAP Performance

Reading



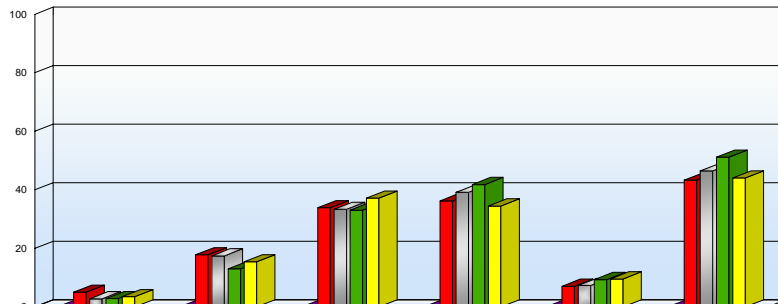
	N/S	U	PP	P	A	P or A
2004	0.00%	0.00%	0.00%	0.00%	0.00%	0.00%
2005	5.70%	3.02%	10.74%	63.76%	16.78%	80.54%
2006	3.36%	5.20%	12.84%	60.24%	18.35%	78.59%
2007	2.82%	2.54%	7.63%	72.03%	14.97%	87.01%
2008	5.04%	2.92%	11.14%	63.13%	17.77%	80.90%

Writing



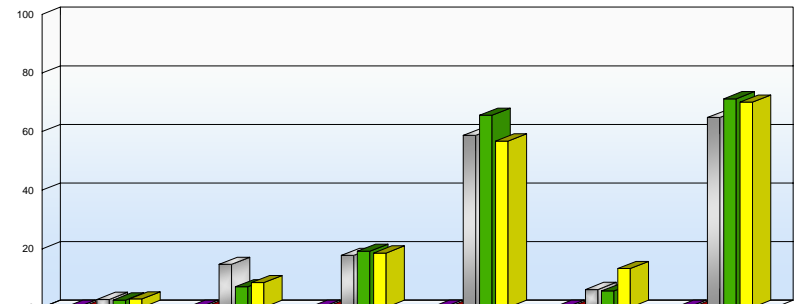
	N/S	U	PP	P	A	P or A
2004	0.00%	0.00%	0.00%	0.00%	0.00%	0.00%
2005	6.04%	2.68%	29.53%	51.01%	10.74%	61.74%
2006	3.67%	3.98%	26.61%	57.80%	7.95%	65.75%
2007	3.11%	1.13%	22.88%	61.58%	11.30%	72.88%
2008	5.04%	2.39%	27.06%	54.64%	10.88%	65.52%

Math



	N/S	U	PP	P	A	P or A
2004	0.00%	0.00%	0.00%	0.00%	0.00%	0.00%
2005	5.03%	17.79%	33.89%	36.24%	7.05%	43.29%
2006	2.75%	17.43%	33.33%	39.14%	7.34%	46.48%
2007	2.82%	12.99%	33.05%	41.81%	9.32%	51.13%
2008	3.45%	15.38%	37.14%	34.48%	9.55%	44.03%

Science



	N/S	U	PP	P	A	P or A
2004	0.00%	0.00%	0.00%	0.00%	0.00%	0.00%
2005	0.00%	0.00%	0.00%	0.00%	0.00%	0.00%
2006	2.75%	14.68%	17.74%	58.72%	6.12%	64.83%
2007	2.54%	7.06%	19.21%	65.54%	5.65%	71.19%
2008	2.92%	8.49%	18.57%	56.76%	13.26%	70.03%

2008 CSAP Table by AYP Category for Fossil Ridge HS

Unsatisfactory		Partially Proficient		Proficient		Advanced	
#	%	#	%	#	%	#	%

Reading Grade 10

Male	9	4.79%	32	17.02%	121	64.36%	19	10.11%
Female	2	1.06%	10	5.29%	117	61.90%	48	25.40%
White	10	2.96%	40	11.83%	211	62.43%	62	18.34%
Hispanic	0	0.00%	2	8.33%	18	75.00%	2	8.33%
Black	1	25.00%	0	0.00%	2	50.00%	0	0.00%
Amer Ind	0	0.00%	0	0.00%	1	50.00%	1	50.00%
Asian	0	0.00%	0	0.00%	6	66.67%	2	22.22%
ELL	0	0.00%	1	10.00%	6	60.00%	2	20.00%
F & R	0	0.00%	5	20.83%	16	66.67%	0	0.00%
Sp Edu	6	23.08%	9	34.62%	10	38.46%	0	0.00%

Writing Grade 10

Male	7	3.72%	72	38.30%	86	45.74%	16	8.51%
Female	2	1.06%	30	15.87%	120	63.49%	25	13.23%
White	9	2.66%	88	26.04%	187	55.33%	39	11.54%
Hispanic	0	0.00%	8	33.33%	13	54.17%	1	4.17%
Black	0	0.00%	2	50.00%	1	25.00%	0	0.00%
Amer Ind	0	0.00%	1	50.00%	0	0.00%	1	50.00%
Asian	0	0.00%	3	33.33%	5	55.56%	0	0.00%
ELL	0	0.00%	3	30.00%	6	60.00%	0	0.00%
F & R	0	0.00%	9	37.50%	12	50.00%	0	0.00%
Sp Edu	5	19.23%	16	61.54%	3	11.54%	1	3.85%

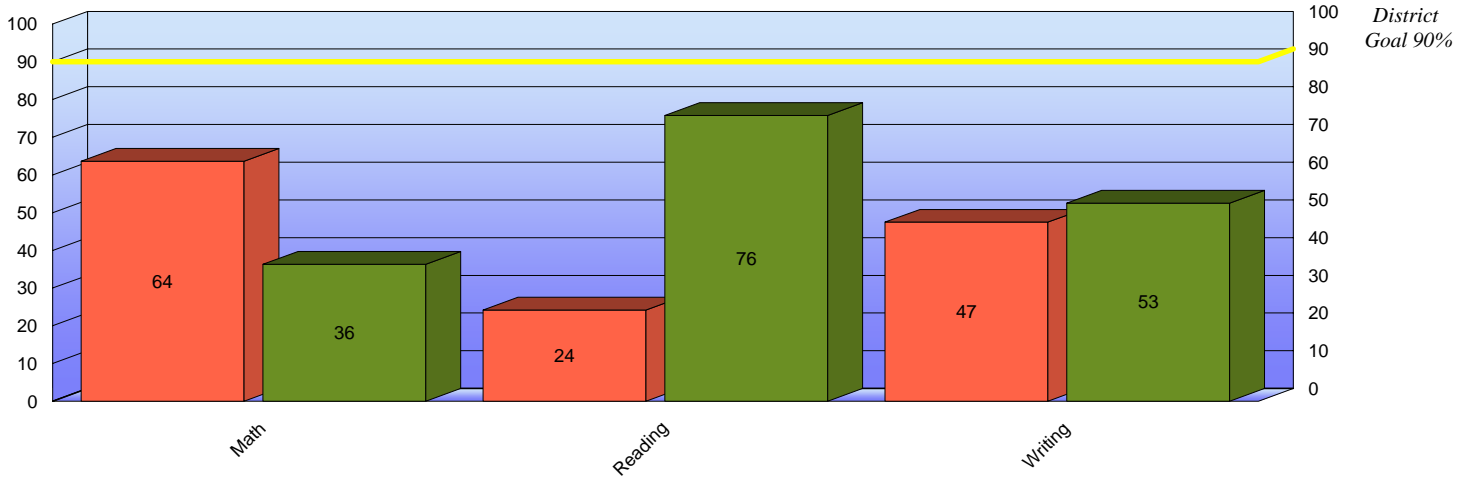
2008 CSAP Table by AYP Category for Fossil Ridge HS

	Unsatisfactory		Partially Proficient		Proficient		Advanced	
	#	%	#	%	#	%	#	%
Math Grade 10								
Male	27	14.36%	66	35.11%	70	37.23%	19	10.11%
Female	31	16.40%	74	39.15%	60	31.75%	17	8.99%
White	49	14.50%	125	36.98%	121	35.80%	32	9.47%
Hispanic	5	20.83%	11	45.83%	6	25.00%	1	4.17%
Black	3	75.00%	1	25.00%	0	0.00%	0	0.00%
Amer Ind	0	0.00%	1	50.00%	0	0.00%	1	50.00%
Asian	1	11.11%	2	22.22%	3	33.33%	2	22.22%
ELL	0	0.00%	6	60.00%	2	20.00%	1	10.00%
F & R	4	16.67%	14	58.33%	5	20.83%	1	4.17%
Sp Edu	16	61.54%	7	26.92%	2	7.69%	1	3.85%

Science Grade 10

Male	16	8.51%	31	16.49%	105	55.85%	30	15.96%
Female	16	8.47%	39	20.63%	109	57.67%	20	10.58%
White	24	7.10%	61	18.05%	195	57.69%	48	14.20%
Hispanic	4	16.67%	7	29.17%	11	45.83%	1	4.17%
Black	2	50.00%	2	50.00%	0	0.00%	0	0.00%
Amer Ind	0	0.00%	0	0.00%	2	100.00%	0	0.00%
Asian	2	22.22%	0	0.00%	6	66.67%	1	11.11%
ELL	0	0.00%	0	0.00%	8	80.00%	1	10.00%
F & R	2	8.33%	6	25.00%	15	62.50%	1	4.17%
Sp Edu	11	42.31%	5	19.23%	8	30.77%	2	7.69%

CSAP One Years Growth for Fossil Ridge HS All Grades



Subject	Growth Category	Count	%
Math	< 1 Year	205	63.66
Math	> 1 Year	19	5.90
Math	1 Year	98	30.43
Total Students Tested		322	

Subject	Growth Category	Count	%
Reading	< 1 Year	77	24.21
Reading	> 1 Year	89	27.99
Reading	1 Year	152	47.80
Total Students Tested		318	

Subject	Growth Category	Count	%
Writing	< 1 Year	151	47.48
Writing	> 1 Year	63	19.81
Writing	1 Year	104	32.70
Total Students Tested		318	

CSAP Performance by Cohort for 2007-08 10th Graders Fossil Ridge HS

