

# SAFETY AND SCHOOL ENVIRONMENT

## Non-CSAP Course Offerings

Your School Offers	does	does not
• art.....	<input checked="" type="checkbox"/>	<input type="checkbox"/>
• drama or theater.....	<input checked="" type="checkbox"/>	<input type="checkbox"/>
• music.....	<input checked="" type="checkbox"/>	<input type="checkbox"/>
• physical education.....	<input checked="" type="checkbox"/>	<input type="checkbox"/>
• opportunity for civic or community engagement.....	<input checked="" type="checkbox"/>	<input type="checkbox"/>
• internet safety program.....	<input checked="" type="checkbox"/>	<input type="checkbox"/>
• International Baccalaureate.....	<input checked="" type="checkbox"/>	<input type="checkbox"/>
• extracurricular activities.....	<input checked="" type="checkbox"/>	<input type="checkbox"/>
• athletics.....	<input checked="" type="checkbox"/>	<input type="checkbox"/>
• career and technical education.....	<input checked="" type="checkbox"/>	<input type="checkbox"/>
• honors.....	<input checked="" type="checkbox"/>	<input type="checkbox"/>

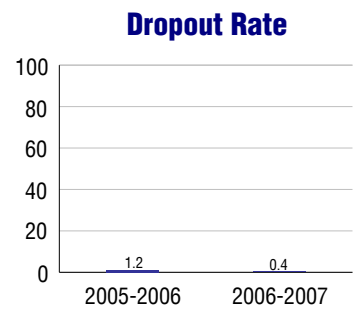
## Safety and Discipline

Safe schools are a top priority for parents, teachers, and communities. Your school safety and discipline record for the 2007-2008 school year is:

Type of Incident	Number of Incidents Reported	Percent of Total Incidents
Substance Abuse - Drugs	5	3.6%
Substance Abuse - Alcohol		
Substance Abuse - Tobacco	9	6.6%
Felony Assaults		
Fights	4	2.9%
Possession of Dangerous Weapons		
Other Violations Code of Conduct	119	86.9%

## Student Attendance and School Calendar

2007-2008	Your School
Enrollment	620
Average Daily Attendance	577
Student Dropouts	0.4%



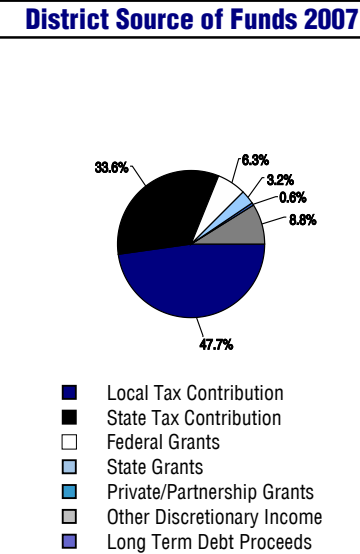
## Student Information Over Time

	2005-2006	2006-2007	2007-2008
Student Enrollment Stability	96.9%	94.2%	97.4%
Students Eligible for Free and Reduced Lunch	27.4 %	38.0 %	31.9 %

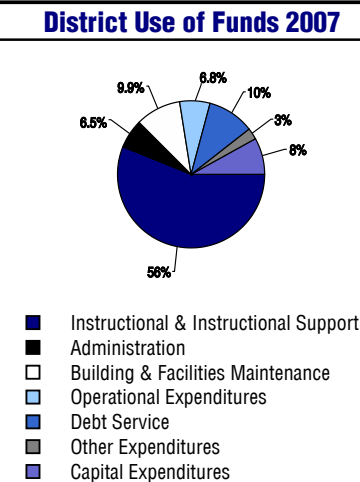
For more information and further details about this report, visit [www.state.co.us/schools](http://www.state.co.us/schools)  
 Colorado Department of Education, 201 East Colfax Ave. Denver, CO 80203  
**Leshar Junior High School**  
 1550/5068/M  
 1400 Stover . Fort Collins, CO 80524 . 970-472-3800  
 10/20/2008

# DISTRICT TAXPAYER'S REPORT

Sources of School District Revenue	2007
Local Tax Contribution	\$114,250,638
State Tax Contribution	80,427,619
Federal Grants	15,050,605
State Grants	7,563,555
Private/Partnership Grants	1,336,324
Other Discretionary Income	21,077,908
<b>Total District Operating Revenue</b>	<b>\$239,706,649</b>
Long Term Debt Proceeds	0
<b>Total District Revenue</b>	<b>\$239,706,649</b>
<b>Total District Operating Revenue Per Pupil =</b>	<b>\$10,027</b>
<b>Total District Revenue Per Pupil (Including Long Term Debt) =</b>	<b>\$10,027</b>
<b>District Per Pupil Operating Revenue =</b>	<b>\$5,711</b>
<b>State Average Per Pupil Operating Revenue =</b>	<b>\$6,080</b>



District Use of Funds	2007
Instructional & Instructional Support	\$140,809,614
Administration	16,345,848
Building & Facilities Maintenance	24,946,494
Operational Expenditures	16,978,954
Debt Service	25,233,553
Other Expenditures	6,325,146
<b>Total District Operating Expenditures</b>	<b>\$230,639,609</b>
Capital Expenditures	20,503,549
<b>Total District Use of Funds</b>	<b>\$251,143,158</b>



## District Debt and Capital Construction & Equipment

Total Outstanding Bonded Debt	\$238,809,466
Average Annual Percentage Interest Rate on Debt	4.42%
Amount Raised from Most Recent Bond	\$175,000,000
Amount Spent on New Buildings During Last 2 Years	\$37,207,317

## Accreditation

Accreditation is Colorado's primary accountability system, incorporating achievement levels, academic growth, achievement gaps, post-secondary readiness, improvement planning, and compliance. The state accredits districts and districts accredit individual schools.

District Accreditation Status for the 2007-2008 school year:

## Voter Approved Funding Changes

Your community did  /did not  hold an election in November 2006

The following items have been approved by voters:

TABOR Override

Bond

Mill Levy Increase

# LESHAR JUNIOR HIGH SCHOOL



**POUDRE R-1**

<http://www.psdschools.org/>  
**School Accountability Report**  
**2007-2008 School Year**

## School Performance Summary

**Overall Academic Performance on State Assessments** **High**

**Academic Growth of Students** **Low**

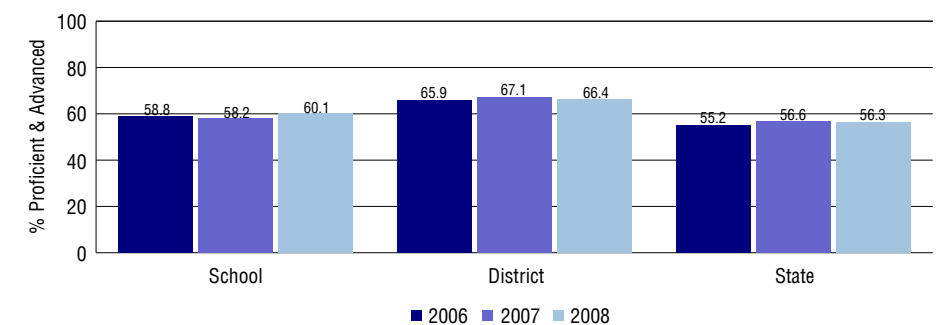
### Overall Academic Performance on State Assessments

Each school in the State received a rating of "Excellent", "High", "Average", "Low", or "Unsatisfactory" for student academic performance based on 2007-2008 CSAP and COACT results. The rating is calculated using weighted percentages of each CSAP proficiency level for all content area and grade results for the school, as well as average COACT Reading, Writing, and Math Grade 11 results.

### Academic Growth of Students

Each school in the State received a rating of "Low", "Typical", or "High" for student academic growth based on CSAP results. The calculation method is new for 2007-2008. The rating is calculated using student percentile scores matched over two years. More information about the Overall Academic Performance rating and Academic Growth of Students calculations can be found here: [http://www.cde.state.co.us/cdeassess/SAR\\_Info.html](http://www.cde.state.co.us/cdeassess/SAR_Info.html).

## Percent Proficient and Advanced for Middle Grades for All Content Areas



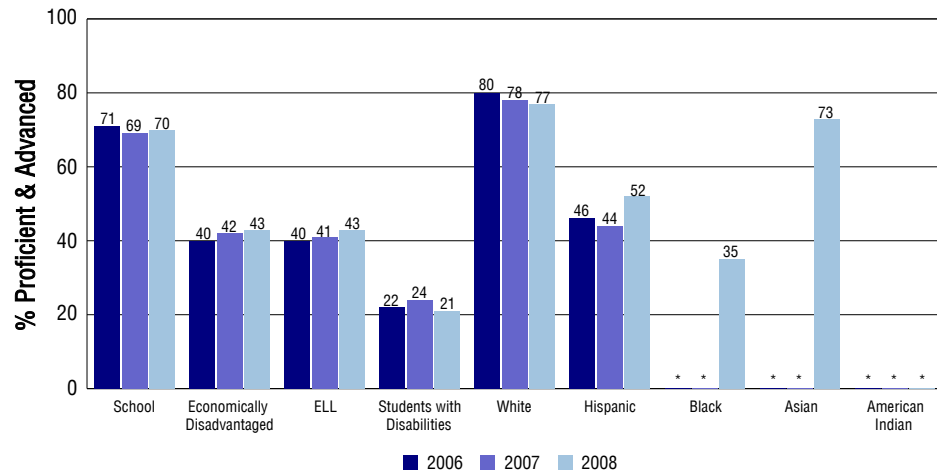
## Student Test Scores Used For Calculating Overall Academic Performance

95.9%	Test Scores Counted
1.0%	Test Scores not used due to Language
3.1%	Test Scores not used due to New Student

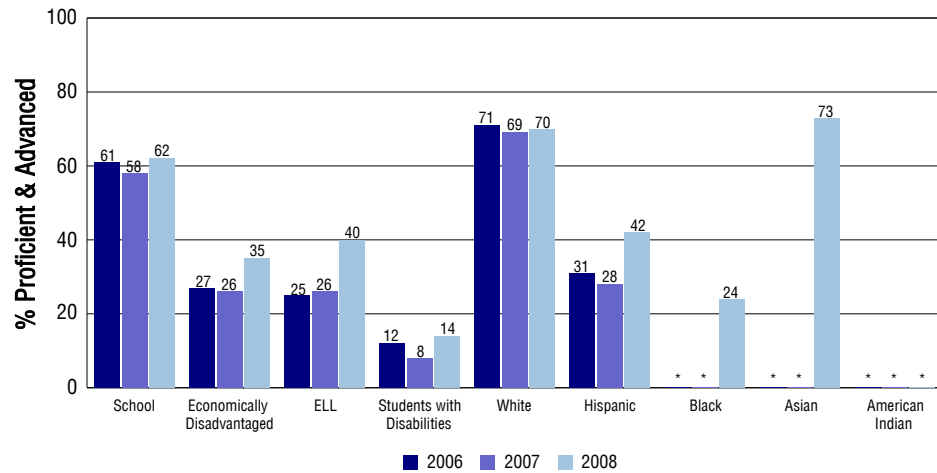
## STUDENT PERFORMANCE

These graphs show the percent Proficient and Advanced trends over the past three years for Reading, Writing, and Math. Results are presented for the entire school for all reported grades as well as for different subgroups. Note: \* indicates any group with less than 16 student results to be reported.

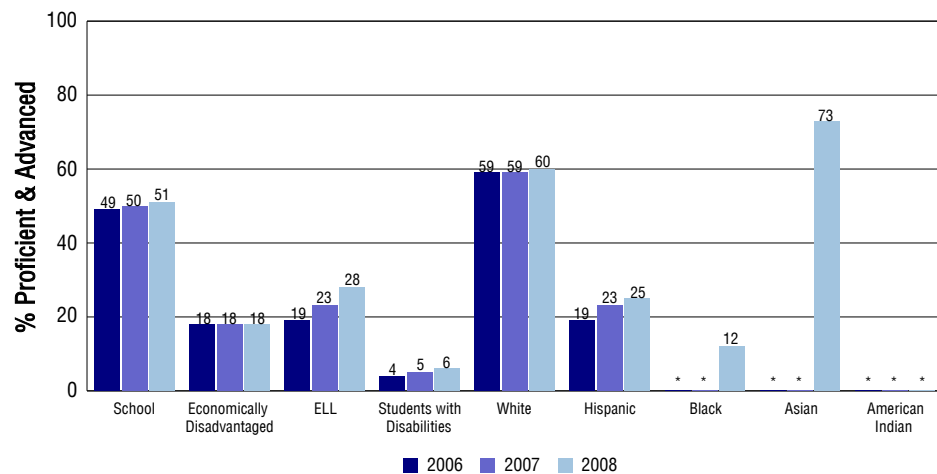
### Reading



### Writing



### Math



## SCHOOL INFORMATION

### School Pride (as submitted by your district)

- 622 interesting, energetic, athletic, intelligent, curious, and diverse students involved in a variety of cocurricular activities and athletic opportunities.
- 41 of the most experienced and decorated classroom teachers in the great state of Colorado.
- A nationally renowned International Baccalaureate Middle Years Program since 1998.
- 48 years of academic and athletic achievement, as evidenced by a high SAR rating every year, and 31 PSD team championships.

### School Goals (as submitted by your district)

Continue working as individuals, subject area, and grade level teams to become a model professional learning community by implementing, assessing, and revising the data driven strategies and intended outcomes identified in our school improvement plan. We aim to raise the academic performance rating identified on our school accountability report from high to excellent, and promote the fundamental concepts of our IB Middle Years Program (holistic learning, intercultural awareness, and communication) and the IB Learner Profile teaching our students to be inquirers, knowledgeable, thinkers, communicators, principled, openminded, caring, risktakers, balanced, and reflective.

### No Child Left Behind - Adequate Yearly Progress

Did your school make AYP in reading?	No	Math?	Yes
How many targets does your school have?	36	Met?	34

Based on this school's academic performance, your child may be eligible for one or more of the following; ask your school if your child qualifies for:

Extra academic instruction either before or after-school, or in the summer  
Mentoring

For additional information regarding Adequate Yearly Progress please visit <http://www.cde.state.co.us/FedPrograms/ayp/index.asp>

### How Lesher Junior High School Compares To Middle Schools Within A 75-Mile Radius

School	Program Type	Academic Performance	Academic Growth
Ridgeview Classical Charter Schools	Charter	Excellent	Typical
Boltz Junior High School		High	Low
Liberty Common Charter School	Charter	Excellent	High
Blevins Junior High School		High	Low
Lincoln Junior High School		Average	Typical
Peak Alternative Program	Alternative	Unreportable	Unreportable
Northern Colorado Academy Of Arts & Knowledge(1)	Charter	Average	Typical
Webber Junior High School		High	Typical
Mountain View Junior High	Alternative	Low	Low
Preston Junior High School		High	Typical

1 Located in Charter School Institute School District.

## ABOUT OUR STAFF

### School Employment

Each year, your district reports to the Colorado Department of Education on the number of adults who work in your school, as well as the type of work they do. Last year, your school employed:

	Your School		District	
	Full Time	Part Time	Full Time	Part Time
Teachers	37	3	1350	232
Paraprofessionals	10	4	449	201
Administrators	2	0	94	8
Other Professionals	0	0	180	86
School Support	8	6	612	191
School Counselors	2	0	48	26
School Librarians	1	0	28	7
<b>Total Staff</b>	72		3406	

### Students per Teacher Ratio

	Student Enrollment	Students per Teacher
Grade 7	252	20.3
Grade 8	228	17.7
Grade 9	140	11.2

### Professional Experience of Teachers

	Your School	District
Average years of teaching experience	10	11
Percent of teachers teaching in the subject in which they received their degree	70%	74%
Number of teachers with Masters or Doctoral degrees	26	879
Teachers with 3 years or more of teaching experience	29	1297
Teachers with less than 3 years of teaching experience	11	285
Number of professional development days	4	4

### Salaries

	Your School	District	State
Average Teacher Salary	\$46,561	\$47,380	\$47,494
Average Administrator Salary	\$91,914	\$90,845	\$80,444

Principal: Thomas Dodd

Number of years as Principal at this school: 3

Number of years as Principal at any school: 3